



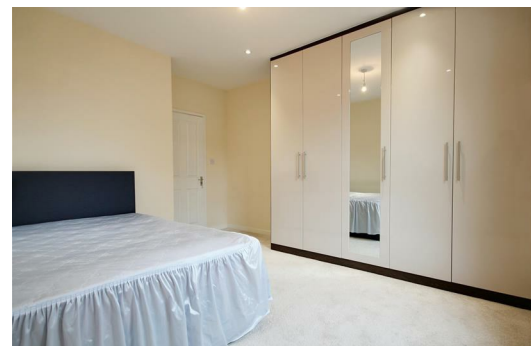
**High Road, London  
NW10 2SU**


**£1,400 Per Calendar Month**

Presenting this refurbished one bedroom split level flat located in the heart of Willesden Green near to Willesden Green tube station (Jubilee line - Zone 2) and other transport links.

This split-level flat comprises of a spacious open plan living room/kitchen which leads out to the large private garden on the ground floor, and on the second floor is the double bedroom with fitted and modern bathroom. Further benefits include gas central heating, double glazed windows throughout, additional WC on the ground floor and own private garden.

Great location near to the shops, cafes and restaurants of Willesden Green



Energy Efficiency Rating		
	Current	Potential
Very energy efficient - lower running costs		
(92 plus) <b>A</b>		
(81-91) <b>B</b>		
(69-80) <b>C</b>	<b>76</b>	<b>76</b>
(55-68) <b>D</b>		
(39-54) <b>E</b>		
(21-38) <b>F</b>		
(1-20) <b>G</b>		
Not energy efficient - higher running costs		
<b>England &amp; Wales</b>	EU Directive 2002/91/EC	

Environmental Impact (CO <sub>2</sub> ) Rating		
	Current	Potential
Very environmentally friendly - lower CO <sub>2</sub> emissions		
(92 plus) <b>A</b>		
(81-91) <b>B</b>		
(69-80) <b>C</b>	<b>78</b>	<b>78</b>
(55-68) <b>D</b>		
(39-54) <b>E</b>		
(21-38) <b>F</b>		
(1-20) <b>G</b>		
Not environmentally friendly - higher CO <sub>2</sub> emissions		
<b>England &amp; Wales</b>	EU Directive 2002/91/EC	