



**Brendon Avenue, London
NW10 1SS**

£1,300 Per Calendar Month

****NEWLY REFURBISHED ONE BEDROOM GROUND FLOOR FLAT WITH GARDEN LOCATED CLOSE TO NEASDEN STATION (JUBILEE LINE)****

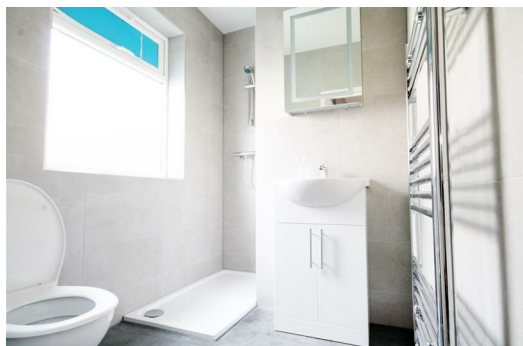
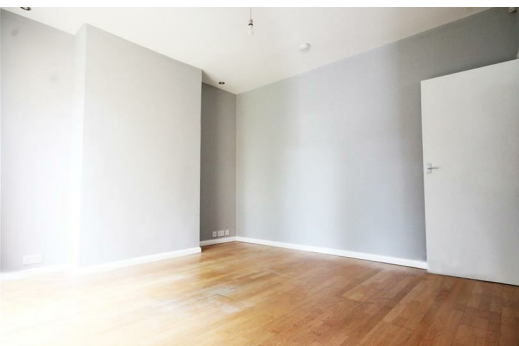
One bedroom ground floor garden flat available in Neasden in a fantastic location just a moments walk from Neasden Station (Jubilee Line).

This flat consists of a separate reception room, double bedroom, brand new bathroom suite, brand new fitted kitchen and communal garden. Further benefits include double glazed windows throughout and gas central heating.

Brand new bathroom and kitchen fitted at the property. Must see.

Located close to the local amenities of Neasden and within a two minute walk to the Station.

Early viewings are strongly advised.



Living Room

Bedroom

Bathroom

Private Garden

