



**London Road, Wembley
Middlesex HA9 7HG**

£1,050 Per Calendar Month

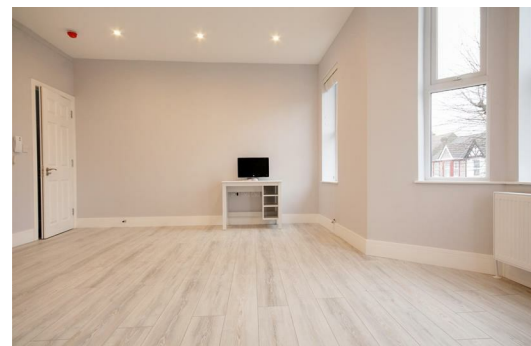
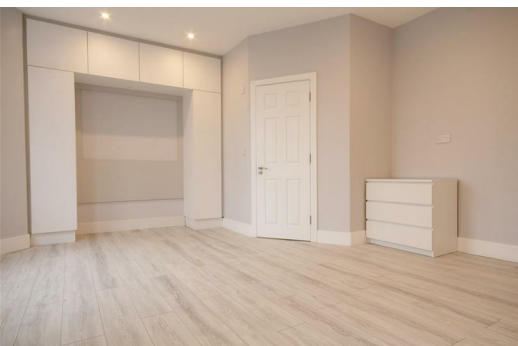
Regal Estates are delighted to offer this stunning en-suite double room in Wembley Central HA0, walking distance to station.


- Double room
- En suite bathroom
- Shared fitted double kitchen/diner
- Shared Garden
- Shared utility room
- Laminate flooring throughout
- Double glazed windows throughout
- Available furnished

ALL BILLS INCLUDED (Electric, Gas, Water, Council Tax and Wi-Fi included)

Close to local amenities

Walking distance to Wembley Central tube Station



Energy Efficiency Rating		
	Current	Potential
Very energy efficient - lower running costs		
(92 plus) A		
(81-91) B		
(69-80) C	69	81
(55-68) D		
(39-54) E		
(21-38) F		
(1-20) G		
Not energy efficient - higher running costs		
England & Wales EU Directive 2002/91/EC 		

Environmental Impact (CO ₂) Rating		
	Current	Potential
Very environmentally friendly - lower CO ₂ emissions		
(92 plus) A		
(81-91) B		
(69-80) C		77
(55-68) D	64	
(39-54) E		
(21-38) F		
(1-20) G		
Not environmentally friendly - higher CO ₂ emissions		
England & Wales EU Directive 2002/91/EC 