



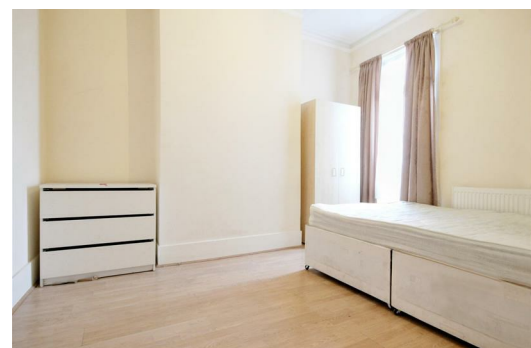
**Burns Road, London
NW10 4DY**


£2,572 Per Calendar Month

Presenting this large and spacious four bedroom mid terraced house in Harlesden which benefits from four spacious double bedrooms, one large reception, kitchen, garden and two bathrooms.

This property is located on a lovely tree lined residential road, within walking distance of Willesden Junction/Harlesden Over/underground train stations and other local amenities.

Available furnished/unfurnished. Call now to arrange a viewing.



Energy Efficiency Rating		
	Current	Potential
Very energy efficient - lower running costs		
(92 plus) A		
(81-91) B		
(69-80) C		
(55-68) D		
(39-54) E		
(21-38) F		
(1-20) G		
Not energy efficient - higher running costs		
	65	83
England & Wales	EU Directive 2002/91/EC 	

Environmental Impact (CO ₂) Rating		
	Current	Potential
Very environmentally friendly - lower CO ₂ emissions		
(92 plus) A		
(81-91) B		
(69-80) C		
(55-68) D		
(39-54) E		
(21-38) F		
(1-20) G		
Not environmentally friendly - higher CO ₂ emissions		
	58	60
England & Wales	EU Directive 2002/91/EC 