



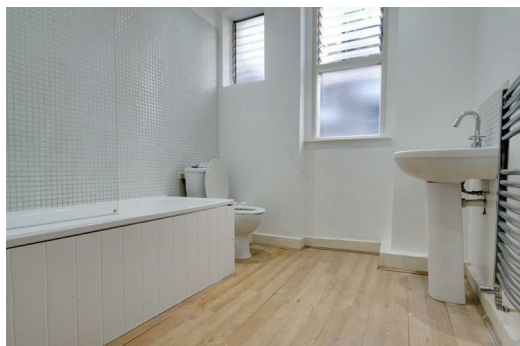
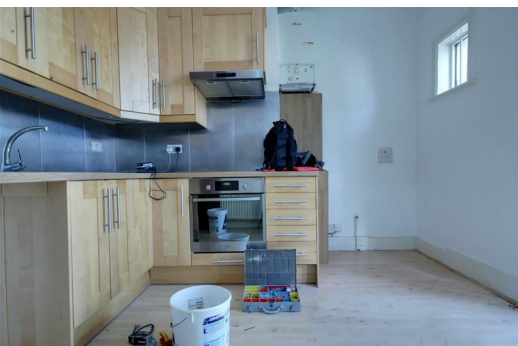
**St. Marys Road, London  
NW10 4AT**

**£1,585 Per Calendar Month**

Regal estates are pleased to present this large two bedroom first floor flat in Harlesden.

The property comprises of a double bedroom, good size single bedroom, large separate reception, fitted kitchen, bathroom suite and brand new carpet throughout.

Available now. Call now to arrange a viewing.



### Reception

12'0" x 14'11" (3.66 x 4.57)

### Double Bedroom

11'3" x 10'8" (3.45 x 3.26)

### Single Bedroom

8'3" x 11'4" (2.53 x 3.47)

### Kitchen

11'6" x 10'6" (3.51 x 3.21)

