



**Neasden Lane, London  
NW10 1PS**

**£2,950 Per Calendar Month**

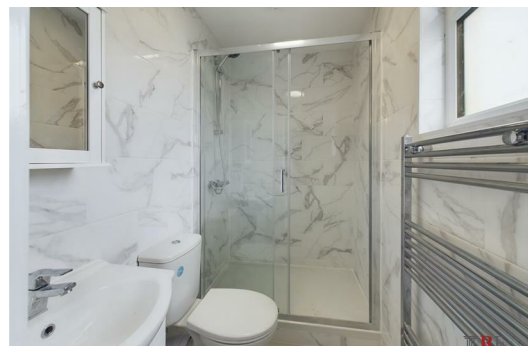
Presenting this brand new refurbished FOUR BEDROOM TWO BATH split level first floor property located just moments away from Neasden Tube Station (Jubilee Line).

This property has been refurbished internally to a high standard and comprises of living room, separate kitchen, four bedrooms and two bathrooms, one of which is a family bathroom and one is an en-suite bathroom attached to a very spacious and airy master bedroom.

An excellent family home with great transport links.

No expense has been spared in this refurbishment and early viewings are advised.

Available Now.



### Single Bedroom

12'9" x 10'9" (3.89 x 3.30)

### Double Bedroom

13'2" x 10'9" (4.02 x 3.30)

### Reception

17'1" x 15'3" (5.21 x 4.66)

### Kitchen

9'1" x 7'6" (2.77 x 2.30)

