



**Vicarage Way, London
NW10 0NA**

£1,950 Per Calendar Month

****SPACIOUS FOUR BEDROOM FLAT WITH TWO BATHROOMS AND INCLUDING THE COUNCIL TAX, WATER AND TV LICENCE BILLS WITHIN THE RENT****

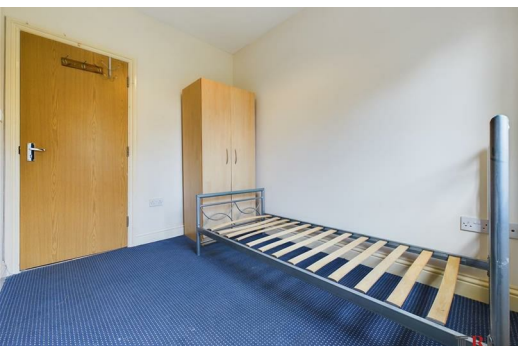
Presenting this four bedroom split level flat located in Neasden. This flat benefits from three double bedrooms and one single bedroom, an open plan living room and kitchen and also two bathrooms.

Three Double Bedrooms
One Single Bedroom
Open plan living room/kitchen
Two bathrooms

Council tax, water and TV licence bills included in the rent

Close proximity to great local transport links and amenities.

Early viewings are advised. Call us to book a viewing. Suitable for a family or a maximum of 2 professional sharers. (Not HMO).



Energy Efficiency Rating		
	Current	Potential
Very energy efficient - lower running costs		
(92 plus) A		
(81-91) B		
(69-80) C	72	79
(55-68) D		
(39-54) E		
(21-38) F		
(1-20) G		
Not energy efficient - higher running costs		
England & Wales		
EU Directive 2002/91/EC		

Environmental Impact (CO ₂) Rating		
	Current	Potential
Very environmentally friendly - lower CO2 emissions		
(92 plus) A		
(81-91) B		
(69-80) C	70	80
(55-68) D		
(39-54) E		
(21-38) F		
(1-20) G		
Not environmentally friendly - higher CO2 emissions		
England & Wales		
EU Directive 2002/91/EC		

