



**Heathfield Gardens, London  
NW11 9HX**

**£1,275 Per Calendar Month**

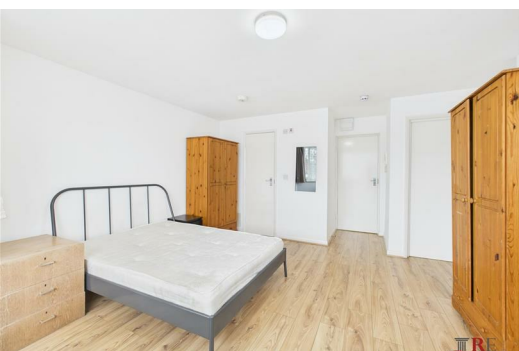
\*\*\*WOW - SPACIOUS FLAT AND JUST A MINUTES WALK FROM BRENT CROSS STATION (NORTHERN LINE)\*\*\*


This stunning first floor flat located on a quiet street is fully furnished to be a comfortable living space with ample storage throughout.

Fantastic location with various transportation links directly to central London.

Council tax and water bills are included in the rent which makes this fantastic value. Ideal property for a single or couple.

Early viewings are advised - call us now to arrange a viewing.



Energy Efficiency Rating		
	Current	Potential
Very energy efficient - lower running costs		
(92 plus) <b>A</b>		
(81-91) <b>B</b>		
(69-80) <b>C</b>		
(55-68) <b>D</b>		
(39-54) <b>E</b>		
(21-38) <b>F</b>		
(1-20) <b>G</b>		
Not energy efficient - higher running costs		
	73	84
England & Wales <div>EU Directive 2002/91/EC</div> 		

Environmental Impact (CO <sub>2</sub> ) Rating		
	Current	Potential
Very environmentally friendly - lower CO2 emissions		
(92 plus) <b>A</b>		
(81-91) <b>B</b>		
(69-80) <b>C</b>		
(55-68) <b>D</b>		
(39-54) <b>E</b>		
(21-38) <b>F</b>		
(1-20) <b>G</b>		
Not environmentally friendly - higher CO2 emissions		
England & Wales <div>EU Directive 2002/91/EC</div> 