



**Harrow Road, London  
W9 2HU**

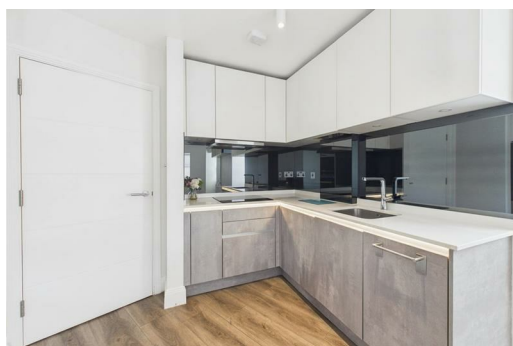
**£2,000 Per Calendar Month**


Situated in the sought-after Maida Hill area of W9, this well-presented one-bedroom top floor flat offers comfortable and modern living in a vibrant West London location. The property is ideally positioned within easy reach of the shops, cafés and restaurants of Maida Vale, Notting Hill and Portobello Road, while excellent transport links are available via Westbourne Park and Queen's Park stations, providing convenient access across London.

The accommodation comprises a bright open-plan living room and fully fitted modern kitchen, complete with integrated dishwasher and washing machine. There is a separate double bedroom benefiting from built-in wardrobes, and a contemporary bathroom.

An ideal home for professionals seeking a well-located property in a popular residential area.

Call to arrange a viewing.



Energy Efficiency Rating		
	Current	Potential
Very energy efficient - lower running costs		
(92 plus) <b>A</b>		
(81-91) <b>B</b>		
(69-80) <b>C</b>	<b>79</b>	<b>79</b>
(55-68) <b>D</b>		
(39-54) <b>E</b>		
(21-38) <b>F</b>		
(1-20) <b>G</b>		
Not energy efficient - higher running costs		
<b>England &amp; Wales</b>	EU Directive 2002/91/EC	

Environmental Impact (CO <sub>2</sub> ) Rating		
	Current	Potential
Very environmentally friendly - lower CO <sub>2</sub> emissions		
(92 plus) <b>A</b>		
(81-91) <b>B</b>		
(69-80) <b>C</b>		
(55-68) <b>D</b>		
(39-54) <b>E</b>		
(21-38) <b>F</b>		
(1-20) <b>G</b>		
Not environmentally friendly - higher CO <sub>2</sub> emissions		
<b>England &amp; Wales</b>	EU Directive 2002/91/EC	