



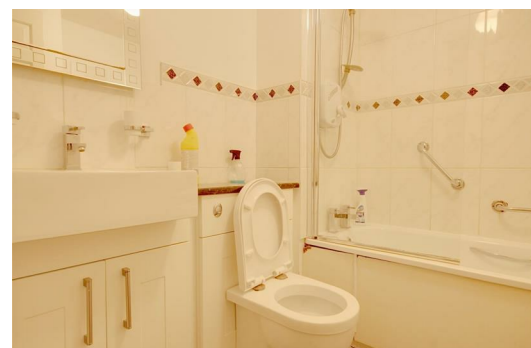
**Campbell Gordon Way, London  
NW2 6RW**


**£1,280 Per Calendar Month**

Regal Estates are pleased to present this well presented purpose built first floor apartment in a popular modern development, located opposite to Gladstone Park.

Good size reception room, fitted kitchen, one double bedroom, bathroom, communal gardens, allocated parking.

The nearest tube stations are Willesden Green and Dollis Hill.



Energy Efficiency Rating		
	Current	Potential
Very energy efficient - lower running costs		
(92 plus) <b>A</b>		
(81-91) <b>B</b>		
(69-80) <b>C</b>		
(55-68) <b>D</b>		
(39-54) <b>E</b>		
(21-38) <b>F</b>		
(1-20) <b>G</b>		
Not energy efficient - higher running costs		
	80	82
	EU Directive 2002/91/EC 	

Environmental Impact (CO <sub>2</sub> ) Rating		
	Current	Potential
Very environmentally friendly - lower CO <sub>2</sub> emissions		
(92 plus) <b>A</b>		
(81-91) <b>B</b>		
(69-80) <b>C</b>		
(55-68) <b>D</b>		
(39-54) <b>E</b>		
(21-38) <b>F</b>		
(1-20) <b>G</b>		
Not environmentally friendly - higher CO <sub>2</sub> emissions		
	EU Directive 2002/91/EC 	

