



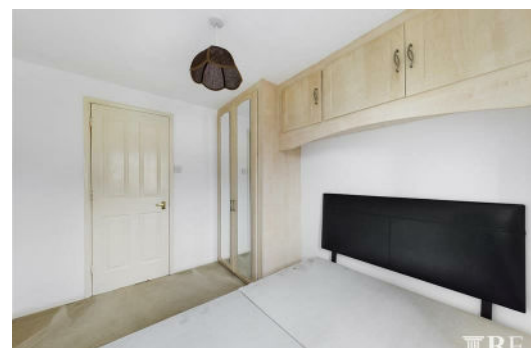
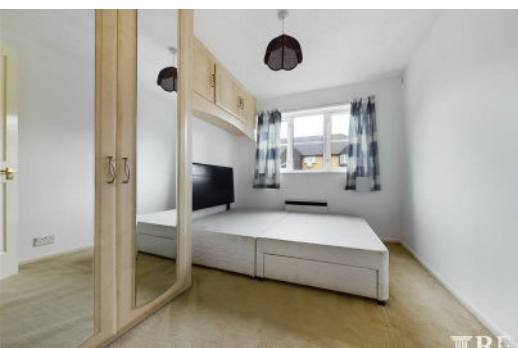
**Kingfisher Way, London
NW10 8TZ**

£1,350 Per Calendar Month

Presenting this one bedroom flat in good condition in a popular quiet residential area in Neasden. This well presented one bedroom first floor flat comprises of a large reception, fitted kitchen, modern bathroom suite and double bedroom with fitted wardrobe. Viewing is highly recommended.

located close to local schools, shops and transport links.

Available to view now.



Reception

17'7" x 10'0" (5.36 x 3.07)

Bathroom

6'8" x 5'5" (2.04 x 1.66)

Bedroom

10'0" x 8'3" (3.06 x 2.53)

Kitchen

7'10" x 6'11" (2.40 x 2.13)

