



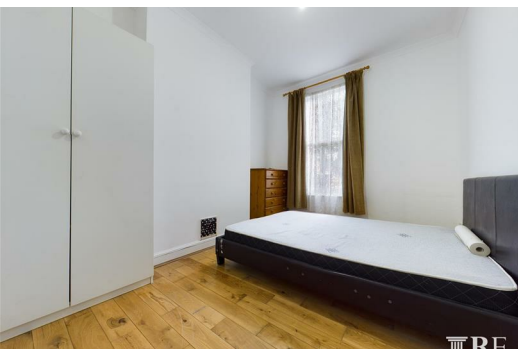
**Leopold Road, London
NW10 9LN**


£1,550 Per Calendar Month

Regal Estates are pleased to present this newly decorated large one bedroom ground floor garden flat in Harlesden/Willesden.

The flat comprises of a double bedroom, separate fitted kitchen, large reception, bathroom suite and own private garden.

Available Now.



Energy Efficiency Rating		
	Current	Potential
Very energy efficient - lower running costs		
(92 plus) A		
(81-91) B		
(69-80) C		
(55-68) D		
(39-54) E		
(21-38) F		
(1-20) G		
Not energy efficient - higher running costs		
	72	79
England & Wales EU Directive 2002/91/EC 		

Environmental Impact (CO ₂) Rating		
	Current	Potential
Very environmentally friendly - lower CO ₂ emissions		
(92 plus) A		
(81-91) B		
(69-80) C		
(55-68) D		
(39-54) E		
(21-38) F		
(1-20) G		
Not environmentally friendly - higher CO ₂ emissions		
England & Wales EU Directive 2002/91/EC 