



**Portnall Road, London  
W9 3BA**

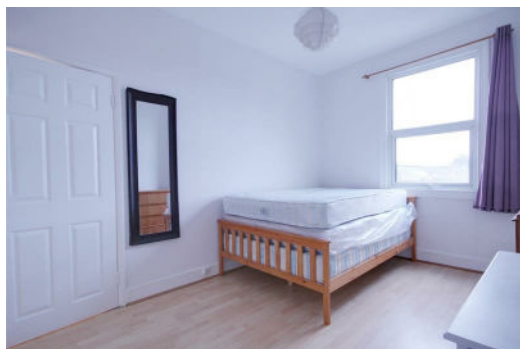
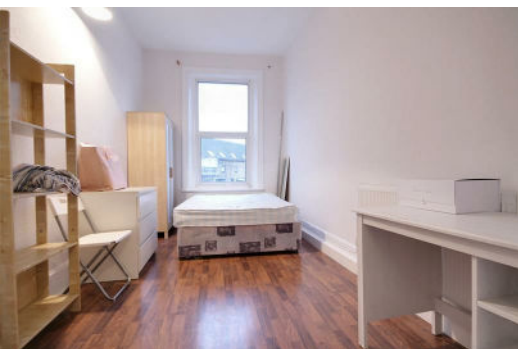
**£2,300 Per Calendar Month**

Available now!

Four double bedroom/open plan kitchen/lounge flat spread over three floors. This flat benefits from its own entrance, four double bedrooms, brand new open plan kitchen/lounge, brand new bathroom suite and one additional WC.

Portnall Road is ideal placed for easy access to the many transport links and amenities of Maida Vale, Queens Park and the Harrow Road.

Call us to arrange an immediate viewing.



### Bedroom 1

8'2" x 14'7" (2.51 x 4.46)

### Bedroom 2

12'9" x 10'9" (3.90 x 3.28)

### Bedroom 3

8'6" x 15'1" (2.60 x 4.61)

### Bedroom 4

8'4" x 11'8" (2.55 x 3.58)

### Living Room/Lounge

8'0" x 28'2" (2.46 x 8.60)

