



**Churchmead Road, London
NW10 2JX**

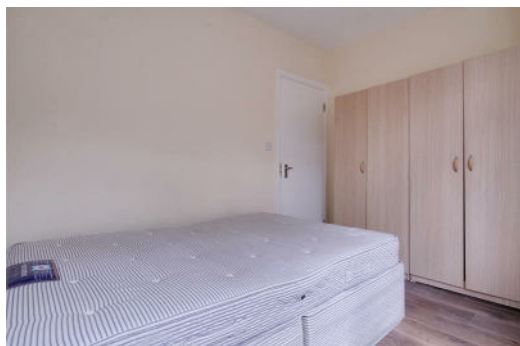
£1,585 Per Calendar Month

Regal Estates are proud to present this spacious second floor two double bedroom flat.

Property comprises of an open plan kitchen/lounge, three piece bath suite and two double bedrooms.

Located close to local amenities and public transport.

Available Now



Open Plan Kitchen/Lounge

13'6" x 11'0" (4.13 x 3.37)

Bedroom

7'8" x 11'0" (2.35 x 3.36)

Bedroom

8'9" x 10'5" (2.67 x 3.19)

